

8ft Reverse Apex  
Log Cabin Shed  
Single/Double Door Range  
Technical Details<sup>©</sup>



For Queries and Help  
please call Product  
Support:  
01636 858377

**PROPRIETARY AND CONFIDENTIALITY**

All the information contained within this document including all technical data, dimensions, shape/form and branding (inc. Trademarks, logos, etc.) Is the sole property of Kybotech Limited. The reproduction and/or disclosure to any third party of any information contained within this document is strictly prohibited. Breaches of the copyright will be dealt with on the highest level of severity with immediate legal proceedings.

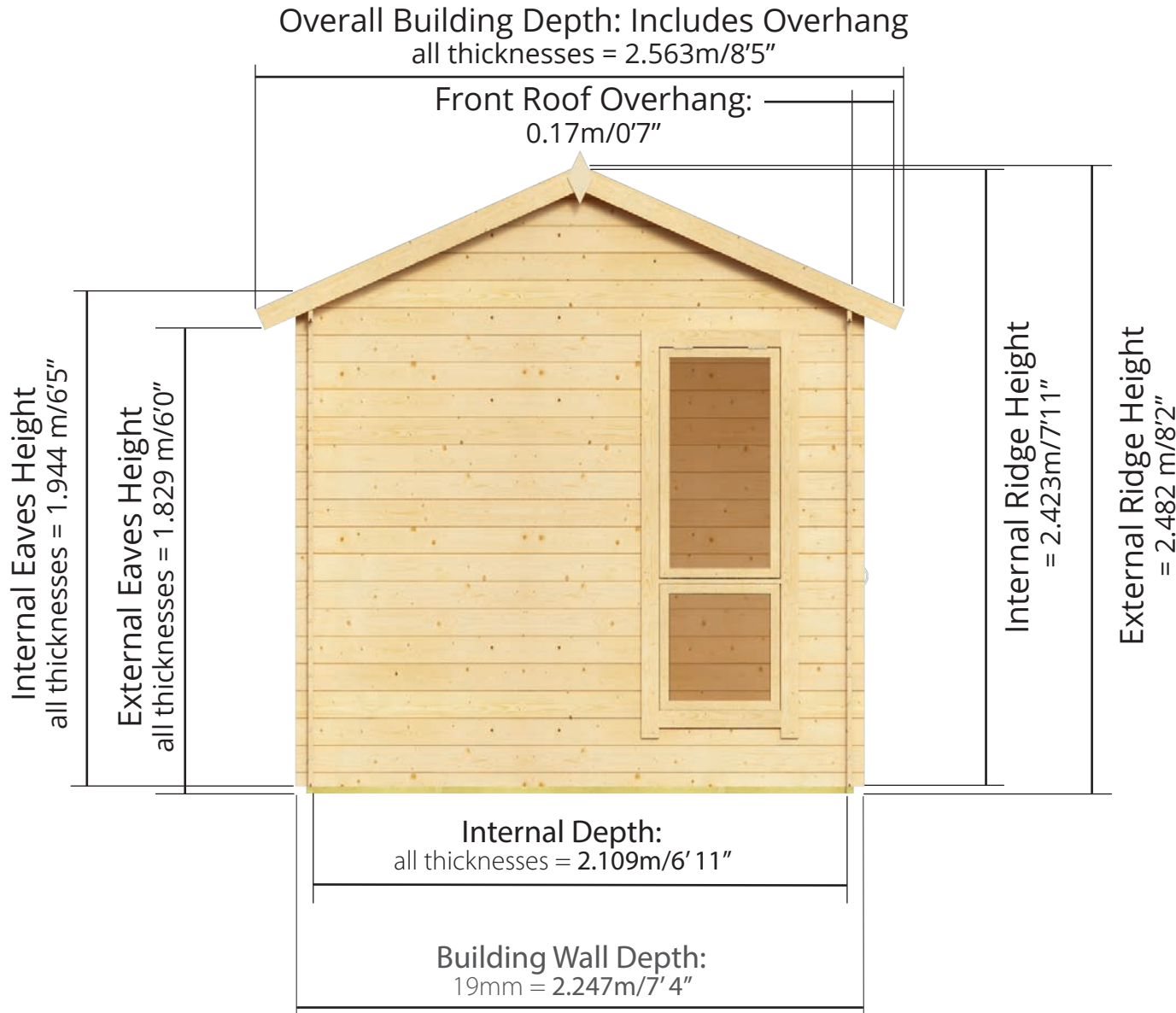
# 8ft Reverse Apex Log Cabin Shed

## Single/Double Door Range

### Side elevation: depth 2.563m/8'5"

## Sizes available

available in standard 19mm cladding types



Reverse Apex Log Cabin Shed  
D8ft x W12ft  
(Including Overhang)

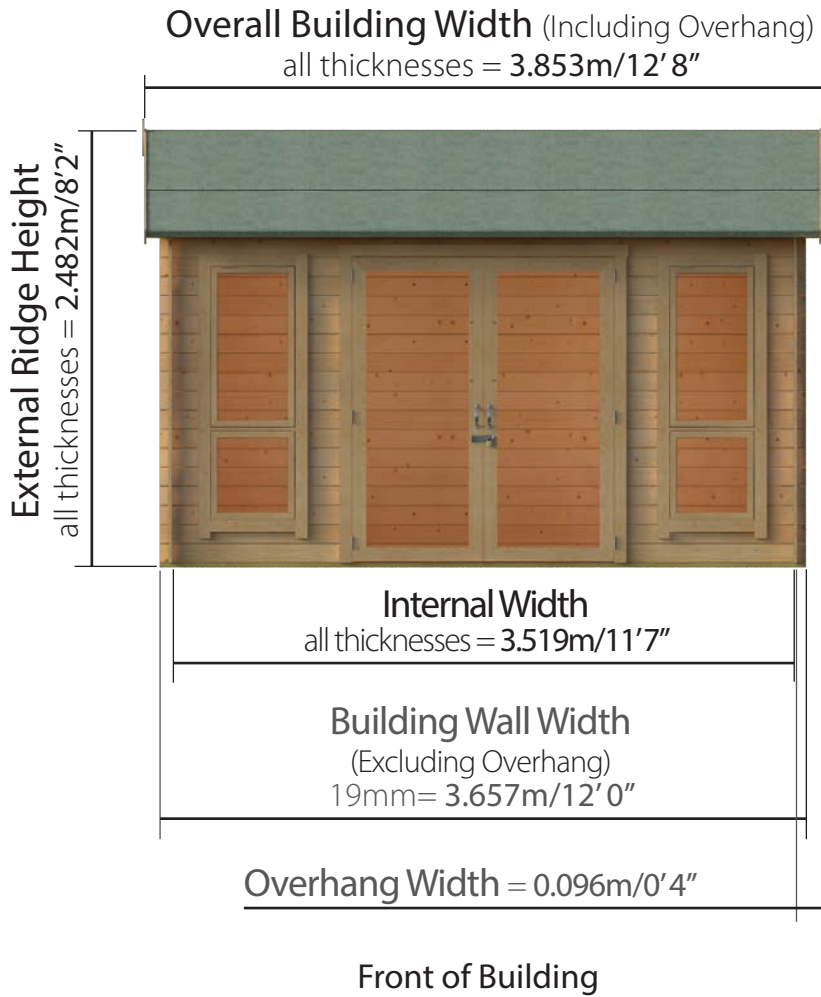


Reverse Apex Log Cabin Shed  
D8ft x W10ft  
(Including Overhang)

# D2.563m x W3.853m / D8'5" x W12'8"

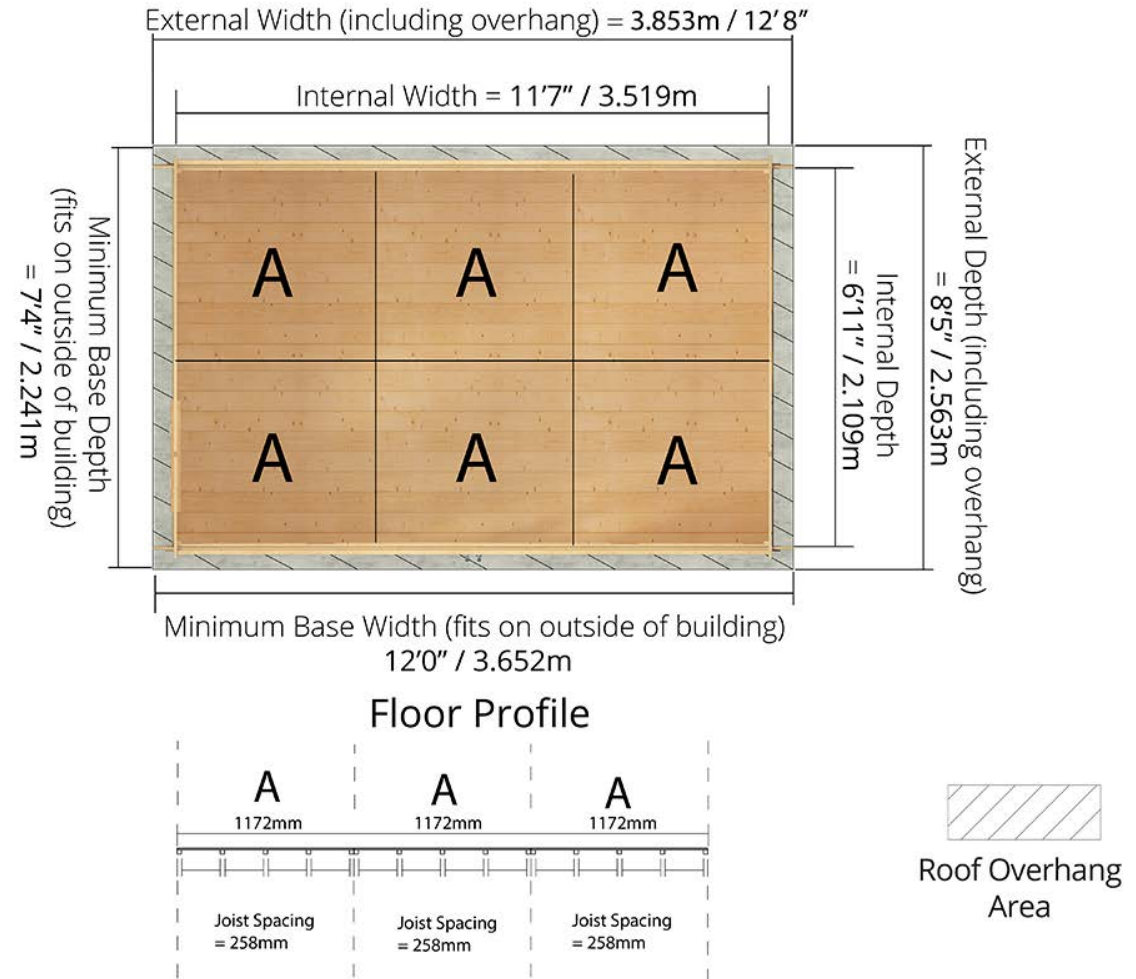
## Interlocking Windowed Shed:

### Front elevation



### Floor Plan

#### 12x8 Floor Plan - With Floor

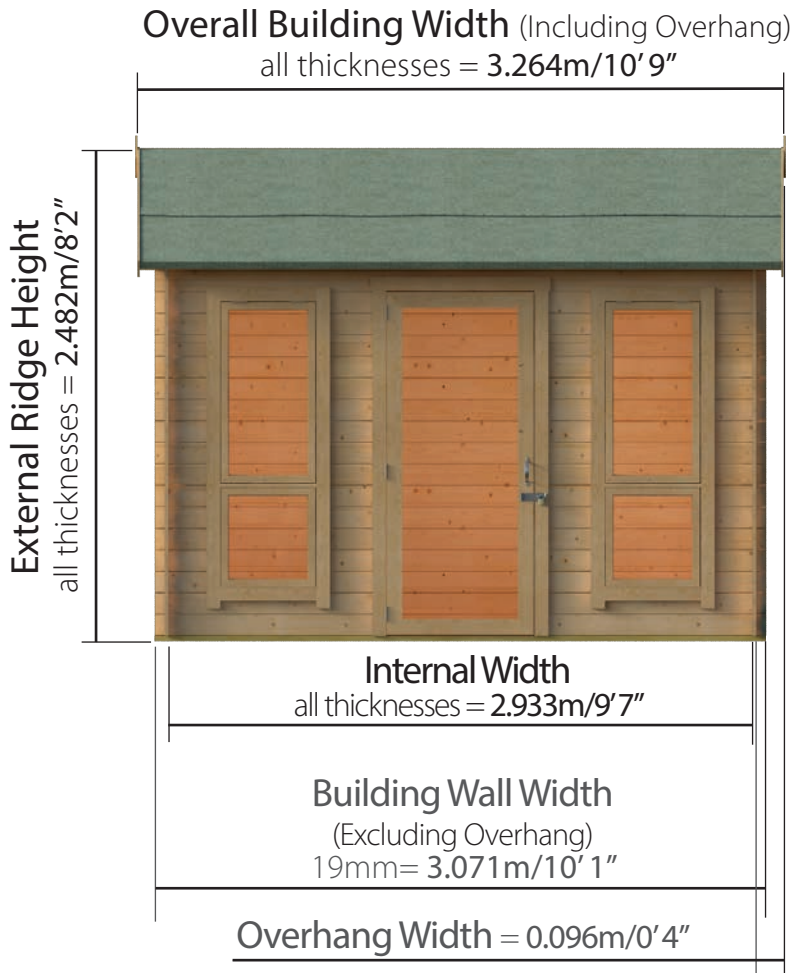


Please note: your base must be perfectly level and drainage is required to allow water to run off the surface. There must also be at least 2m clearance on each side to allow annual treatment to be applied.

# D2.563m x W3.267m / D8'5" x W10'9"

## Interlocking Windowed Shed:

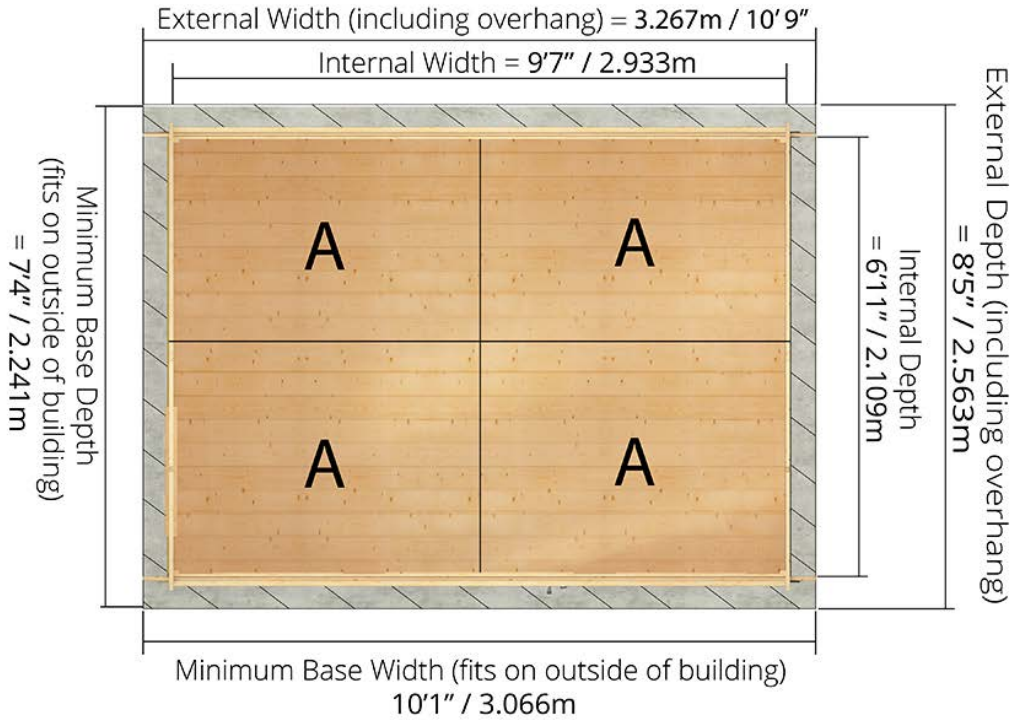
### Front elevation



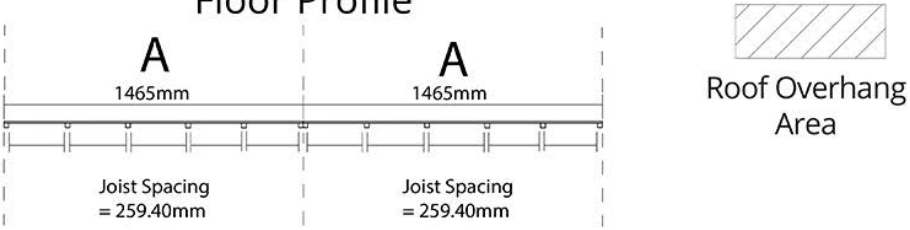
Front of Building

### Floor Plan

#### 10x8 Floor Plan - With Floor



#### Floor Profile



Please note: your base must be perfectly level and drainage is required to allow water to run off the surface. There must also be at least 2m clearance on each side to allow annual treatment to be applied.