

# 6ft Pent Heavy Duty Shed Single Door Range<sup>©</sup>



For Queries and Help  
please call Product  
Support:  
01636 858377

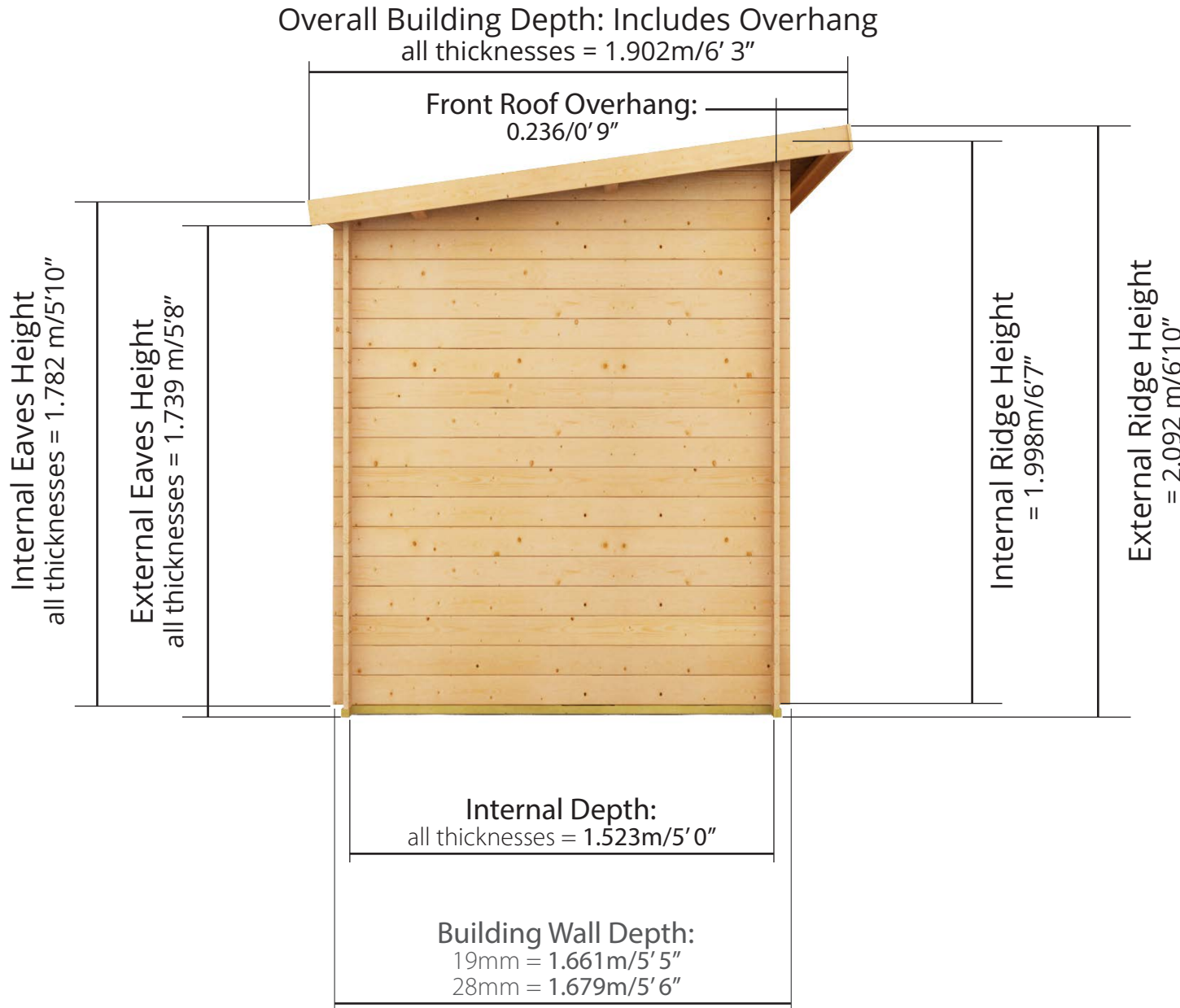
# Pent Heavy Duty Shed

## Single Door Range

Side elevation: depth 1.90m/6'3"

### Sizes available

available in standard 19mm cladding types



Pent Heavy Duty Shed  
D6ft x W12ft  
(Including Overhang)



Pent Heavy Duty Shed  
D6ft x W10ft  
(Including Overhang)

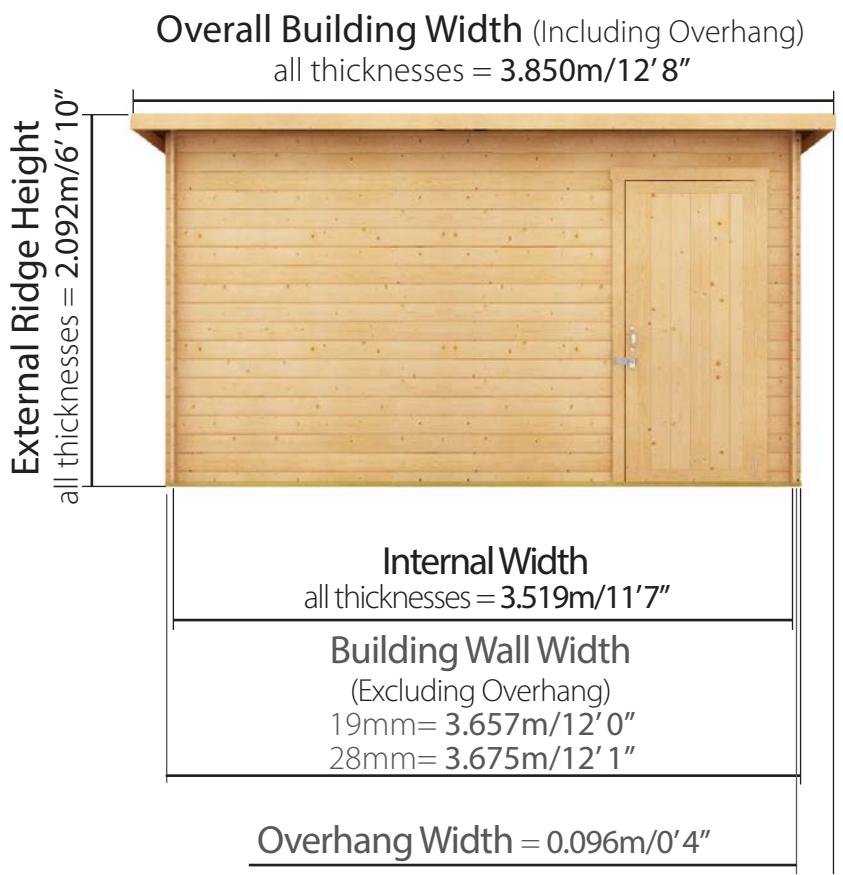


Pent Heavy Duty Shed  
D6ft x W8ft  
(Including Overhang)

# D1.90m x W3.85m / D6'3" x W12'8"

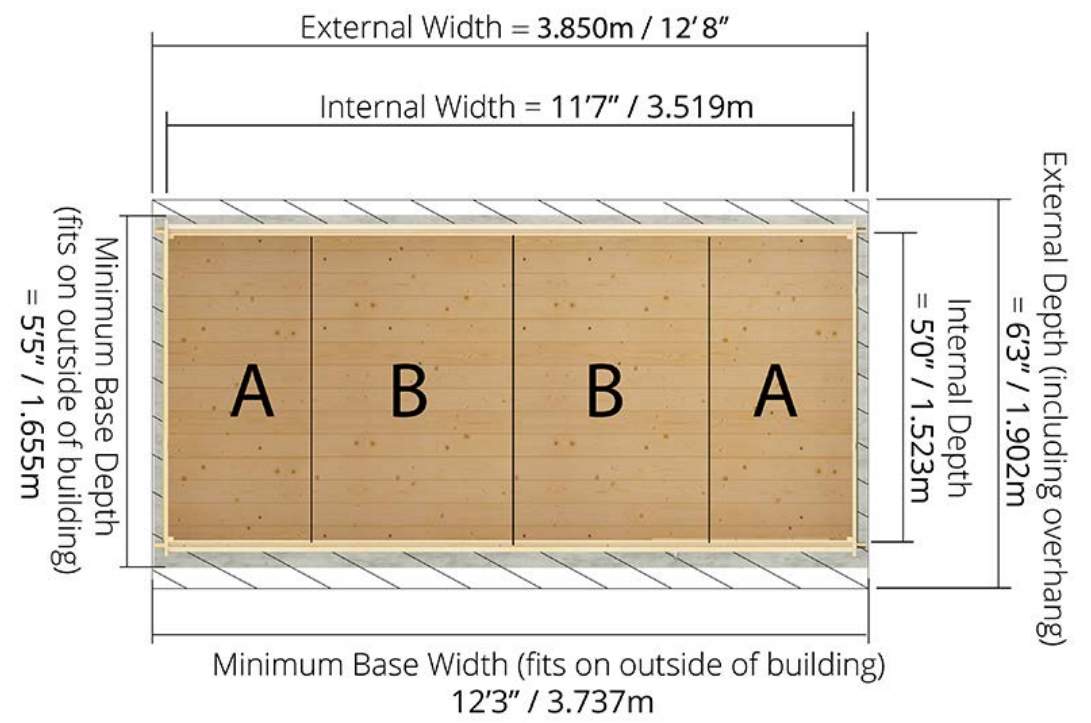
## Interlocking Windowless Shed:

### Front elevation

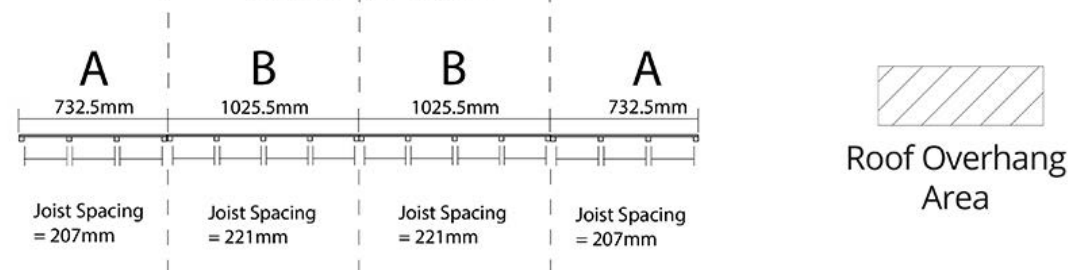


Front of Building

### Floor Plan



### Floor Profile

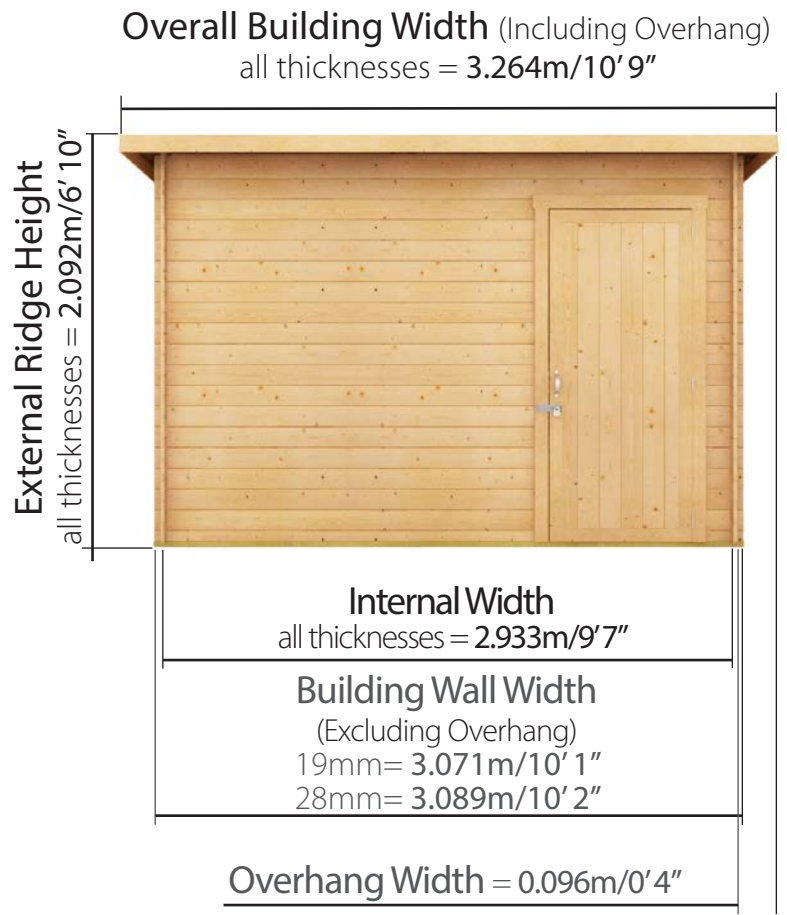


Please note: your base must be perfectly level and drainage is required to allow water to run off the surface. There must also be at least 2m clearance on each side to allow annual treatment to be applied.

D1.90m x W3.26m / D6'3" x W10'9"

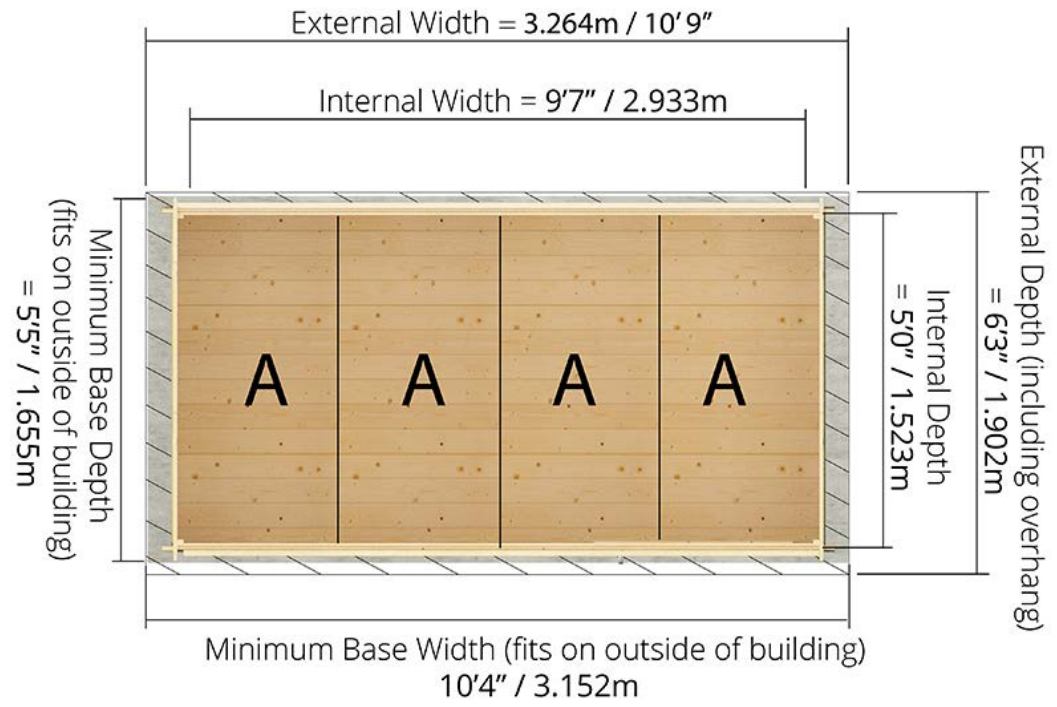
# Interlocking Windowless Shed:

## Front elevation

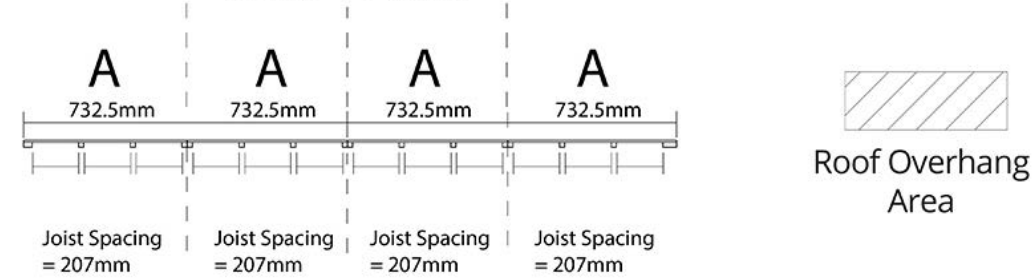


Front of Building

## Floor Plan



## Floor Profile

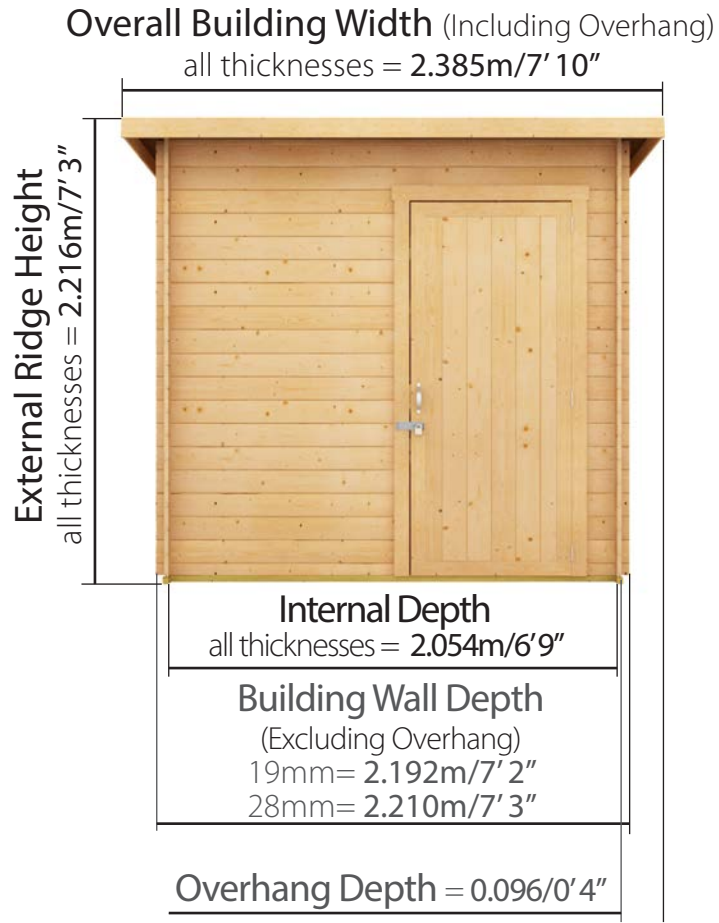


Please note: your base must be perfectly level and drainage is required to allow water to run off the surface. There must also be at least 2m clearance on each side to allow annual treatment to be applied.

# D1.90m x W2.38m / D6'3" x W7'10"

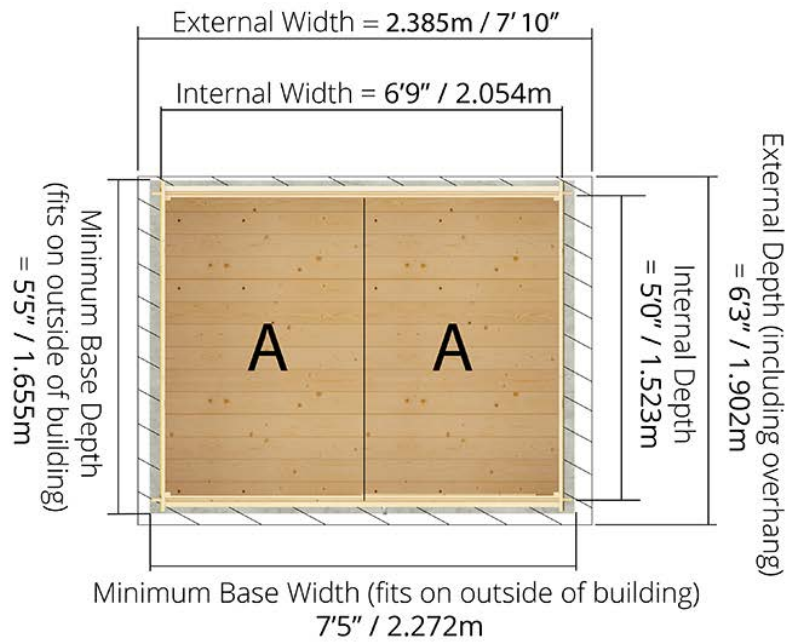
## Interlocking Windowless Shed:

### Front elevation

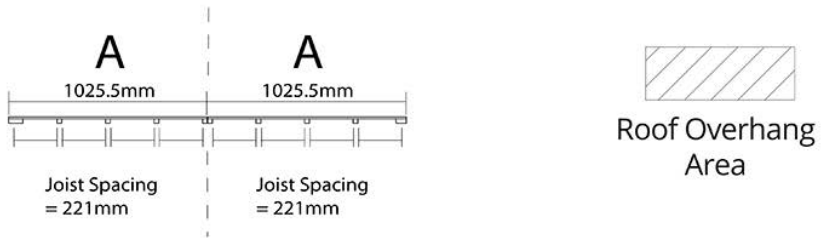


Side of Building

### Floor Plan



### Floor Profile



Please note: your base must be perfectly level and drainage is required to allow water to run off the surface. There must also be at least 2m clearance on each side to allow annual treatment to be applied.